



Publishing Accounts

Guides for Merlin Server

© 2019 - ProjectWizards GmbH

Publishing Accounts - as of March 2019

Merlin Server Configuration	1
Merlin Project Usage	2
Merlin Server Publish Log	4

This quick guide explains how to use the Publishing Accounts of Merlin Server to configure automated and unattended exports for your subscribed projects.

You can use the accounts of a Merlin Server, only from Merlin Project on a mac and on projects subscribed from that particular Merlin Server's Sync service.

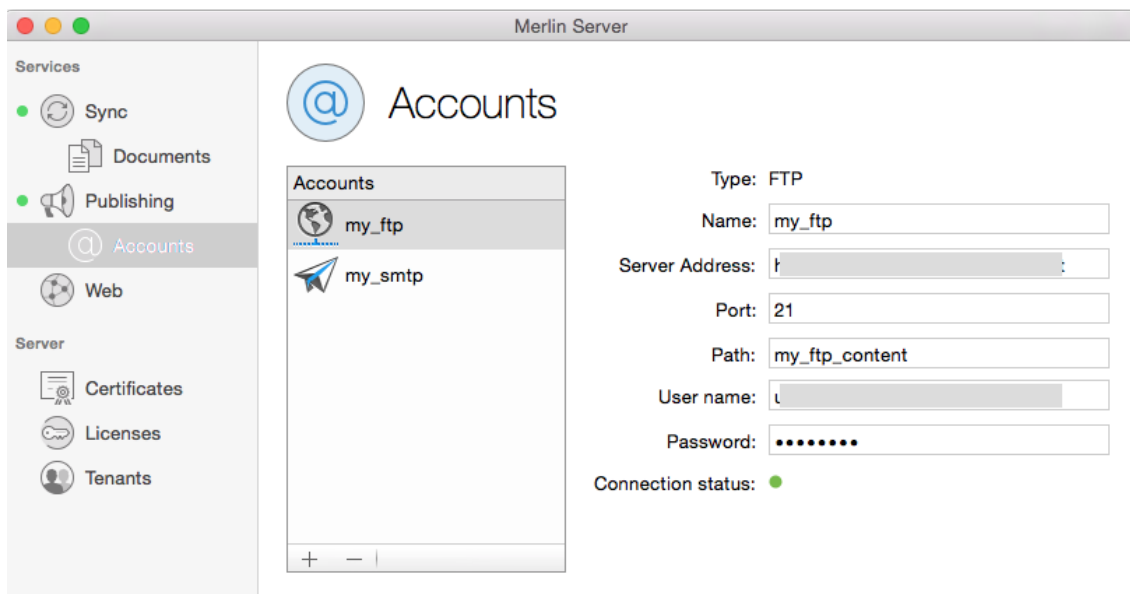
Merlin Server Configuration

- You start the **Merlin Server** application,
- switch to the *Publishing* service window,
- start the Publishing service.
- Now switch to *Publishing > Accounts* window.
- Insert the desired accounts. Merlin Server supports **ftp**, **smtp** and **WebDAV**.



Insert an ftp account, if you want the automated export to be uploaded to an ftp server. Insert an smtp account, if you want to email the automated export. Insert a WebDAV account, if you want to save the automated export on a WebDAV server.

When you enter a new account, Merlin Server checks the connection status, and will show a green dot, if the entered account can be accessed successfully.



Merlin Project Usage

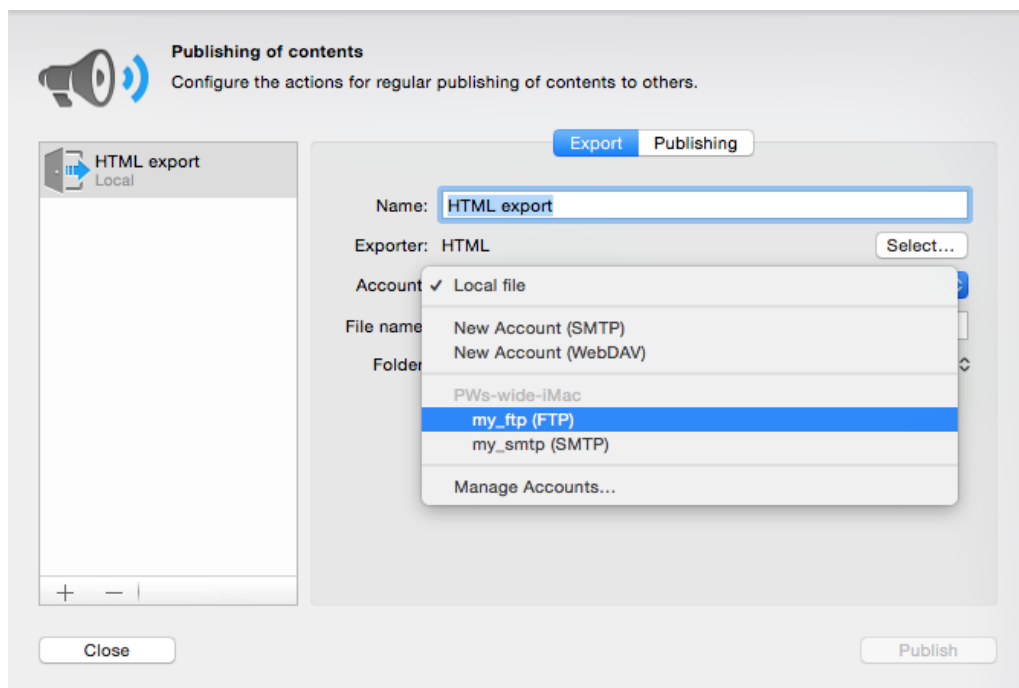
You can access the Publishing Accounts of Merlin Server, only when using the **Merlin Project** mac application and on projects subscribed from that particular Merlin Server's Sync service.

So if not already editing a subscribed document of your Merlin Server, you need to subscribe first. To do so, just proceed as explained in [the dedicated guide](#), which can be found on our server.

To define the publisher

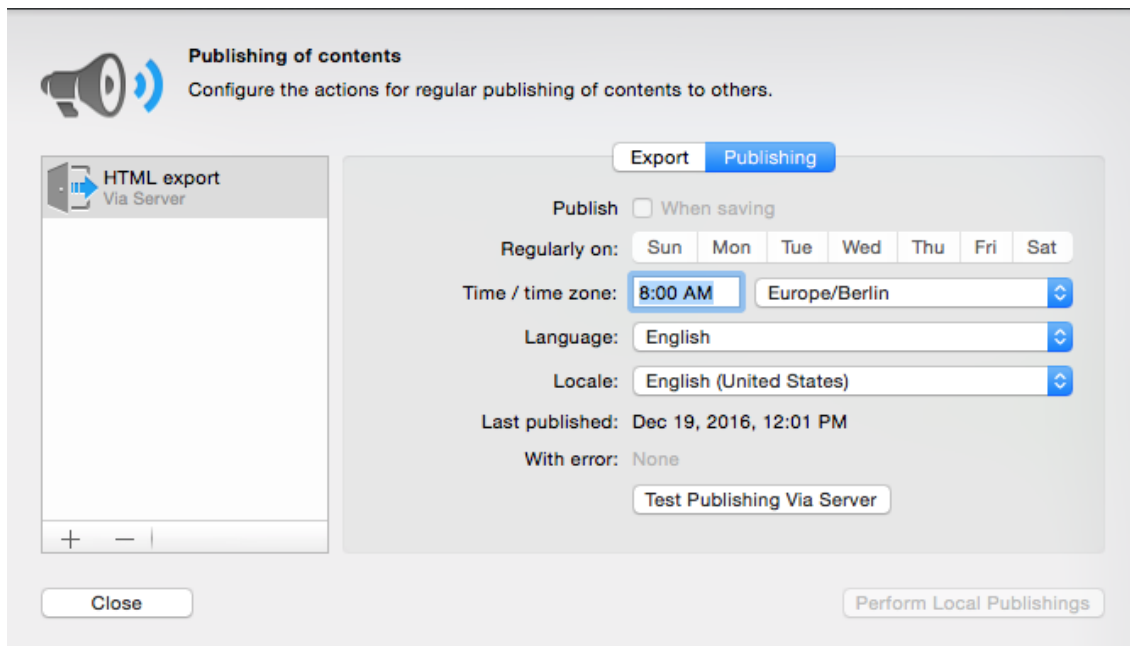
When editing a subscribed project file, and need to create a new publisher.

- Call *File > Publish > Settings...*
- Click onto 'Export' or the '+' button to insert an 'Export' publishing action.
- Configure the desired export, by entering a matching name, selecting the exporter type, file name.
- Select the desired account of Merlin Server out of the 'Account' menu.



- Switch to the 'Publishing' tab.
- Click onto 'Test Publishing Via Server'

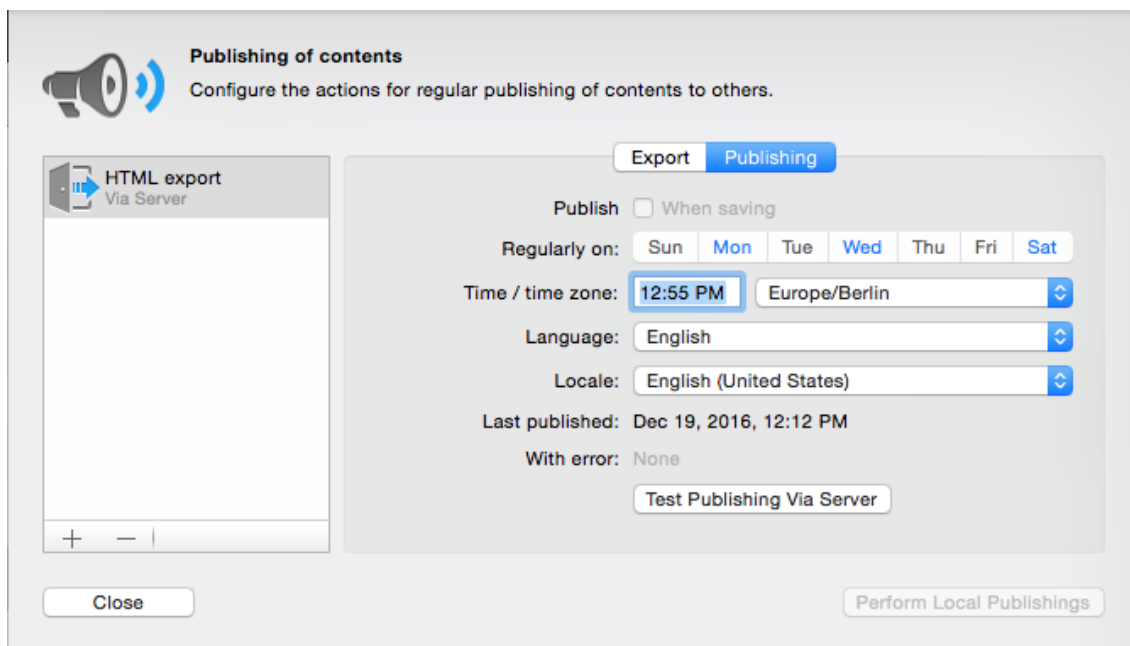
When the server succeeds to publish, it actualizes the last published date. Should there be an error while publishing, this will be also shown in the 'With error:' area.



If you already have defined a publish action in the project, and want to use now the Publishing Accounts of Merlin Server, just edit the saved publishing action as listed in the *File > Publish > Settings* dialogue.

To configure regular unattended publishing actions

You click onto the dates shown in the 'Regularly on:' area and enter the desired time.



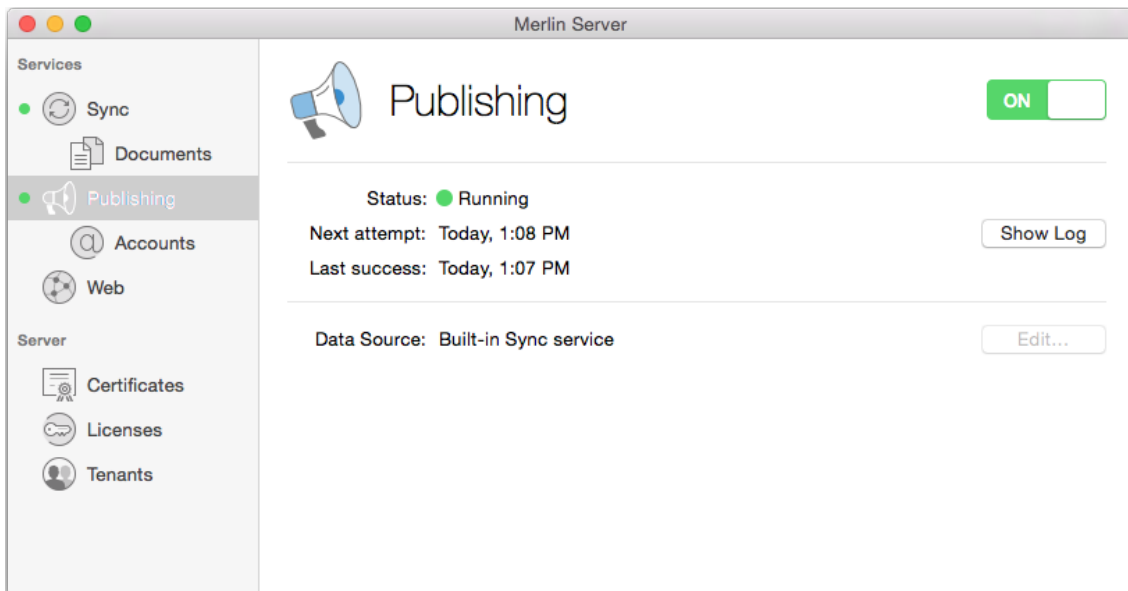
You can close the *Publish > Settings* dialogue, when done.



Should you have selected a Publishing Account from Merlin Server, but the Publishing service is currently not running, Merlin Project will show a related warning. In this case, simply inform the Merlin Server administrator to start the Publishing service. Your publishing settings can be saved in the document, and will be considered by the Publishing service as soon as it starts.

Merlin Server Publish Log

The **Merlin Server** application provides information about the next and last successful attempts to publish automated exports. Just switch to the *Publishing* service window to get this information.



For a full log, you can click onto the 'Show Log' button, which opens the MerlinPublishingService log in the Apple **Console** utility.