



Scroll bars

Guides for Merlin Project

© 2020 - ProjectWizards GmbH

Scroll bars - as of November 2020

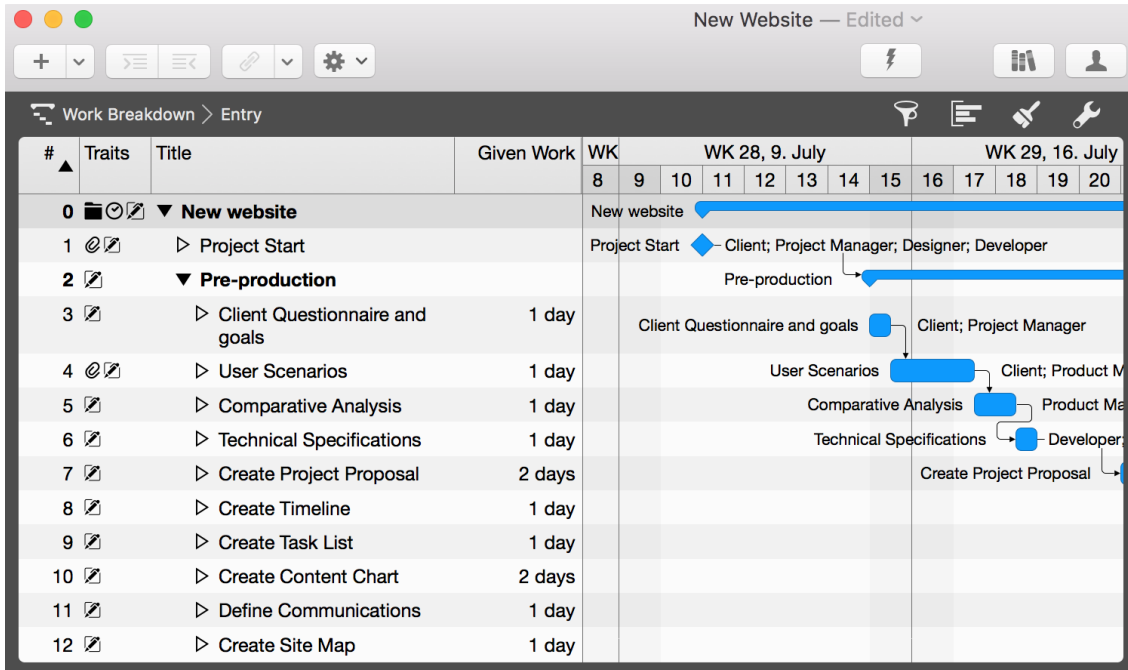
System settings	1
Displaying the scroll bars	2

Scroll bars are used to move the visible area in the program window.

System settings



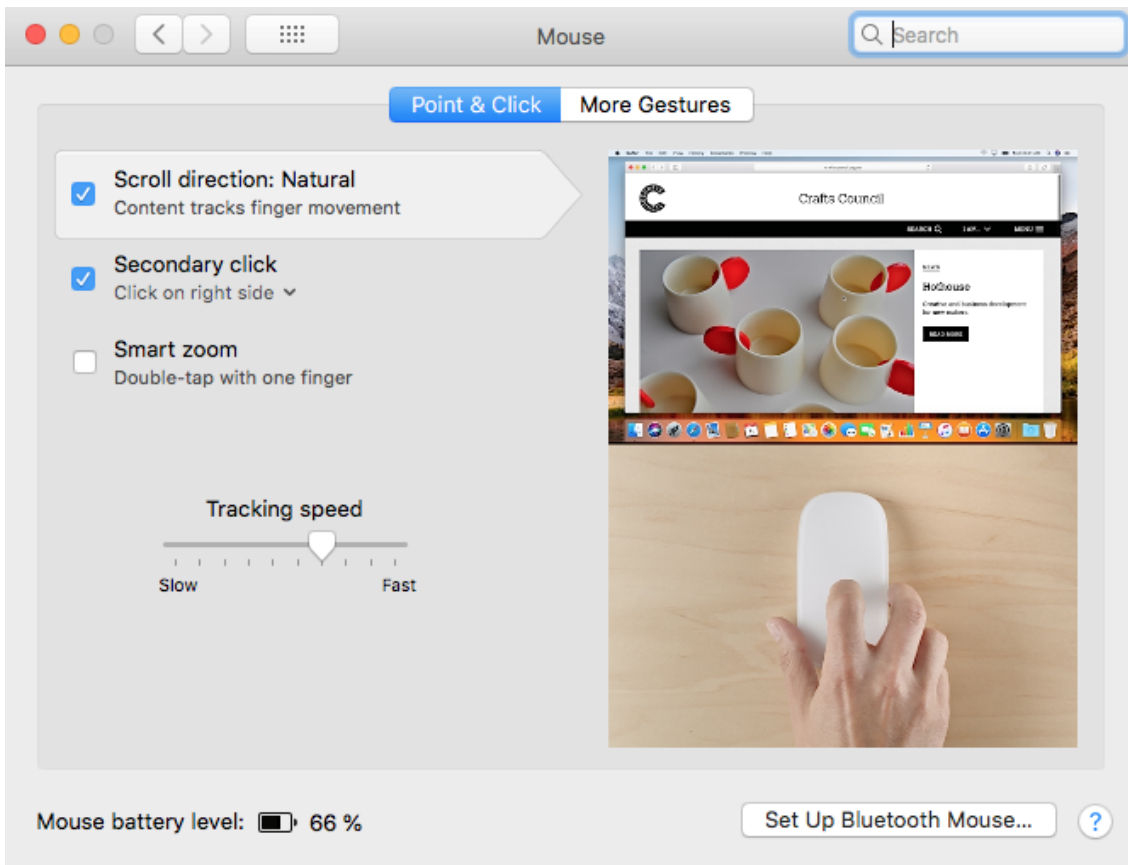
The **scroll bars** and their **behavior** are controlled by the **operating system**. By default, scroll bars are only displayed in **macOS** when **scrolling**.



The content in the different views of Merlin Project can be moved around the visible section using **input devices** such as a **mouse** or a **touchpad**. The **scroll bars** only appear when scrolling.

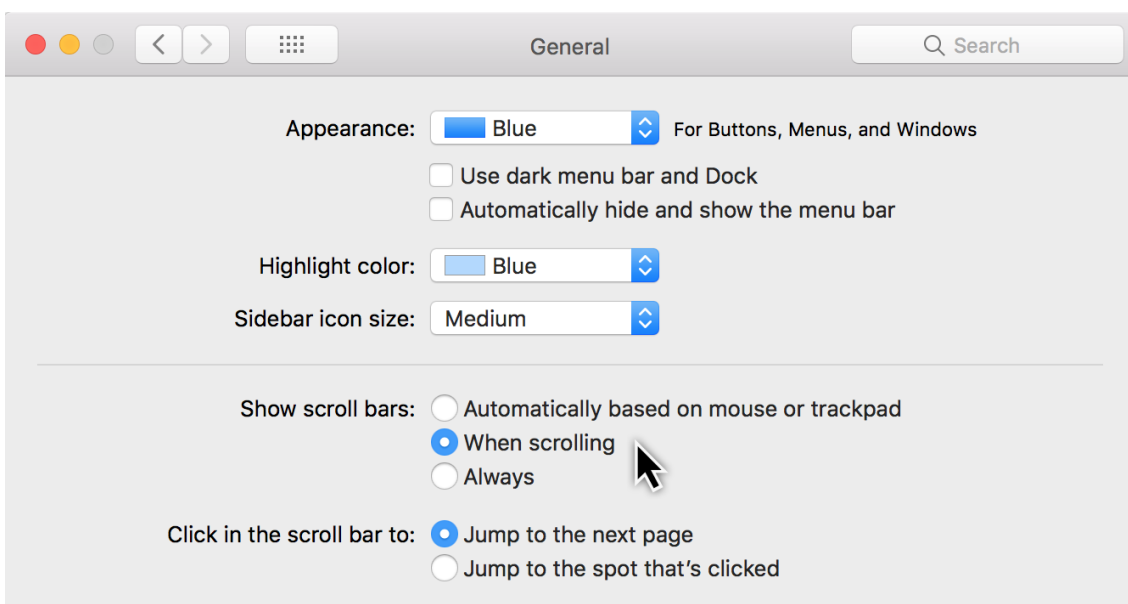


With the **Apple Magic Mouse** and the **Apple Trackpad**, you can watch short animated guides to using gestures to move content under **System Preferences** → **Mouse** and **System Preferences** → **Trackpad**.



Displaying the scroll bars

Open the **System Preferences** in **macOS** and click the **General** icon. There you will find the options for displaying scroll bars when scrolling.



The **three options** for **scrolling** using the scroll bars are **system-wide** and apply to all **programs** used.

- Automatically based on mouse or trackpad
- When scrolling
- Always

If you select **Always**, the **scroll bars** will then always appear in Merlin Project and in **all other programs**.

